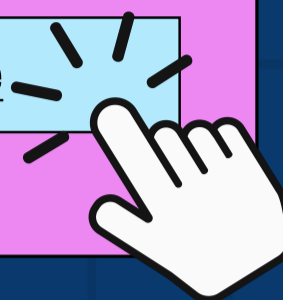




NHSE Wider Workforce Sessions

Free learning for all health and social care staff across Buckinghamshire

[Book online](#)



Supporting SEND families

16th March 2026 - 13:00-14:30
Chalfonts and Gerrards Cross Hub
24th March 2026 - 13:00-14:30
Aylesbury Hub

A learning and sharing workshop discussing how to effectively support families and carers of children with special educational needs and disabilities. Led by Lucy Jones at FACTBucks Parent Carer Forum

Supporting our neurodivergent staff

26th March 2026 - 10:30-12:00
Chalfonts and Gerrards Cross Hub
7th April 2026 - 11:30-13:00
Aylesbury Hub

A learning and sharing workshop discussing how to effectively support staff across the health and social care sector who are neurodivergent and require reasonable adjustments in the workplace.

Click here to book your free space now!

Click above or scan our QR code to book!



Find out more about our sessions and the Buckinghamshire Community Wellbeing Hub at

www.buckscommunityhub.com

Join our mailing list at

events@buckscommunityhub.com

Follow us on **LinkedIn**



Appropriate referrals to mental health services

20th April 2026 - 10:30-12:00
BNU Aylesbury Campus, Walton Street

Co-creation workshop discussing appropriate referrals to mental health services across the VCSE and NHS.

Led by Joy O'Neill at Community Impact Bucks from the VCSE Mental Health Collaboration project and Oxford Health colleagues working in mental health services in Buckinghamshire