

NNPCF UPDATE



National Network of Parent Carer Forums
'Our Strength is our Shared Experience'
www.nnpcf.org.uk

NNPCF Board Members



Martin McAndrew



Richard Jaramba



Elaine Lambe



Jo Harrison



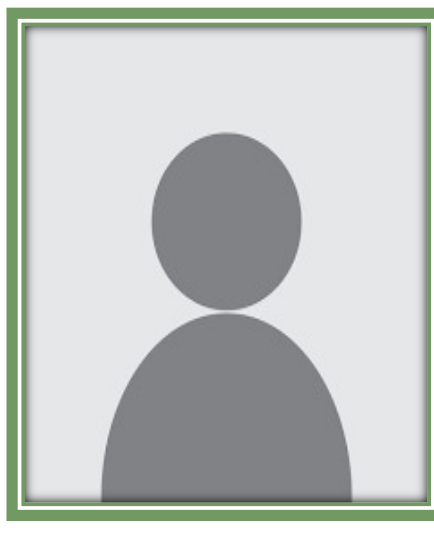
Kenton Mee



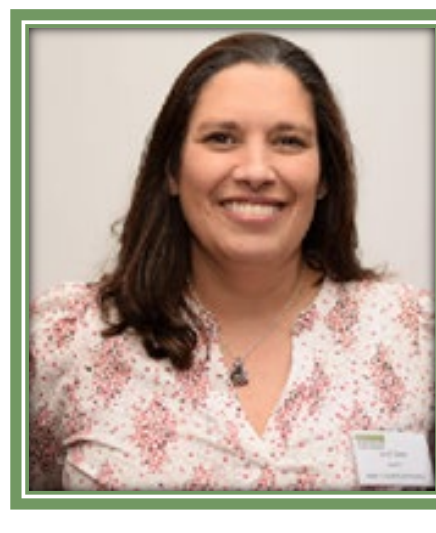
Claire Richmond



Ros Luff



North East



Sarah Clarke



Jayne Fitzgerald

Participation and National Representatives

Team Growth and New Members

- Expanded to 20 National Representatives with new additions: Dave Barnard, Rachel Hale, Lisa Belton, Rhiannon Walton, Martin McAndrew, Becca Selby
- Martin McAndrew who was a National Representative was appointed as the North West Board member.
- Kenton Mee who was a National Representative was appointed as the South West Board member.
- Jo Harrison who was a National Representative was appointed as East of England Board member and was then appointed as Co-Chair.

Contributions to name a few....

- Law Commission Review, SEND Tribunal Procedure, Curriculum & Assessment Review, ISOS stakeholder engagement events, Ofsted & CQC, CDC Coproduction workshop, SEC (Special Education Consortium), National SEND Forum, What Works in SEND



What's next?.....

Governments commitment to "Breaking Down Barriers to Opportunity and Giving Children the Best Start in Life"

1. **Best Start in Life** – the first 1,001 days including, high quality early education and childcare
2. **Every child to Achieve and Thrive at school** – through excellent teaching and high standards including those with SEND
3. **Build skills for opportunity and growth** – so that every young person can follow the pathway that is right for them.
4. **Family Security** – ensuring every child has a safe loving home and tackling the barriers that mean too many families struggle to afford the essentials.

[Break Down Barriers to Opportunity - GOV.UK](https://www.gov.uk/break-down-barriers-to-opportunity)



National Network of Parent Carer Forums
'Our Strength is our Shared Experience'
www.nnpkf.org.uk

Parent Carer Participation Participation Advisers



Lisa Aldred

**Parent Carer
Participation Adviser**

Yorkshire and Humber (Bradford, Calderdale, East Riding of Yorkshire, Hull, Kirklees, Leeds, North Yorkshire, Wakefield, York). North West (all except Wigan) and Cumbria

lisa.aldred@contact.org.uk
07421 451678

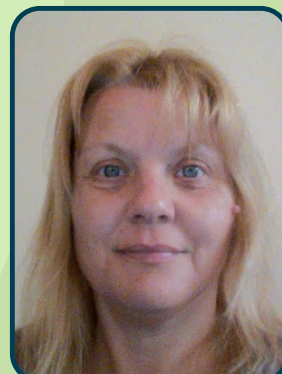


Sue Mennear

**Parent Carer Participation
Adviser**

South West (except Bristol) & South East
Buckinghamshire, Hampshire,
Portsmouth, Reading, Southampton, Isle
of Wight, Surrey, Slough, Oxfordshire
and Wokingham)

sue.mennear@contact.org.uk
07920 655056



Cindy Baylis

**Parent Carer
Participation Adviser**

East Midlands and West Midlands,
Yorkshire and the Humber (Barnsley,
Doncaster, North East Lincolnshire,
North Lincolnshire, Rotherham,
Sheffield and Wigan)

cindy.baylis@contact.org.uk
07920 655079



Heather Tarbuck

**Parent Carer
Participation Adviser**

London North East, London South and
South West (Bristol)

heather.tarbuck@contact.org.uk
020 73264522/07920 655165



Laura Burling

**Interim Parent Carer
Participation Adviser**

North West London & South East: Brighton
and Hove, East Sussex, Kent, Medway, Milton
Keynes and West Sussex

laura.burling@contact.org.uk
07808 774233

Parent Carer Participation Support Team & Health Lead



Jaime Dowling

Grants Co-ordinator

jaime.dowling@contact.org.uk

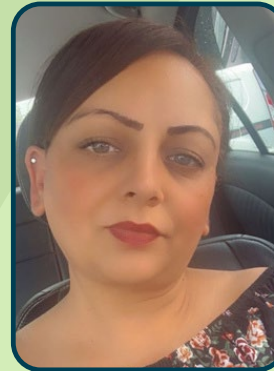


Amanda Elliot

Strategic Health Lead

Amanda.elliott@contact.org.uk

07941 964590



Anapal Rehal

Programme Administrator

anapal.rehal@contact.org.uk

07421 450581



Helen Reid

Programme Officer

helen.reid@contact.org.uk

07738 895007

Parent Carer Participation Management Team



Kate Lovelace-Collins

**Head of Parent Carer
Participation**

kate.lovelace-collins@contact.org.uk
07458 045694



Olivia Newbolt

**Operations Lead & Parent
Carer Participation Adviser**

East of England and South East (West
Berkshire, Windsor and Maidenhead
and Bracknell Forest)

olivia.newbolt@contact.org.uk
07579 852056



Sarah Lee

**Operations Lead and Parent
Carer Participation Adviser
(North East)**

sarah.lee@contact.org.uk
07920 654967



Ben Bennett

Grants Manager

ben.bennett@contact.org.uk
07421 450545



Carolyn Deveney

**Assistant Director of
Parent Engagement**

carolyn.deveney@contact.org.uk
07905 917066

Core Offer

Direct support:

Named Parent Carer Participation adviser, support with grants and monitoring, Strategic Health lead

Partnership working:

NNPCF and regional meetings, joint conference, consortium partners (Kids, CDC, SENDIASs), sustainable peer support model

Information and training:

Online learning sessions and training programmes, website and online resources, Equality Diversity and inclusion sessions, toolkits, and support with policy development, joint newsletter

Governance and legal issues:

Community Matters Yorkshire subscription

Wellbeing:

CIC assistance programme, Ele

Wider support:

Contact services including the Freephone helpline

Enhanced Offer

Associate pool

Intensive/bespoke Community Matters support

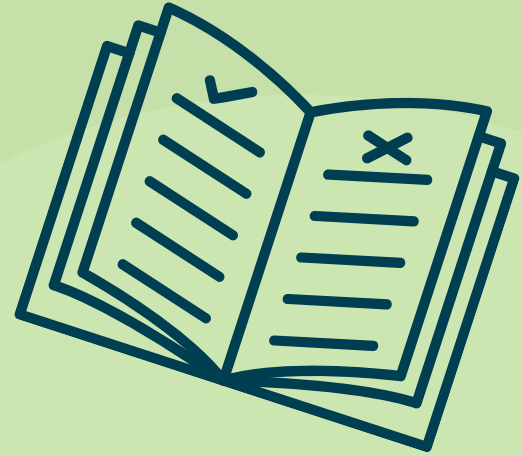
Support to the forum's strategic partners



Parent Carer Forum Handbook

The second edition of the handbook for parent carer forums

- Small focus groups with forum members happening end of February
- Feedback will be incorporated into the handbook
- Once live the handbook will be a living document
- We will rely on forum feedback to keep the handbook relevant and up to date
- Handbook will cover, the basics, setting up a forum, running a forum, working in partnership, communication and the parent carer voice, support for forums, managing difficult situations, and developing existing forums – and more.





National Network of Parent Carer Forums
'Our Strength is our Shared Experience'
www.nnpcf.org.uk

contact *For families
with disabled children*

Questions and comments

Planning partners:



Department
for Education



Sponsors:

