

# FACT Parent Carer Forum Newsletter May 2024



## What is FACT Bucks?

FACT stands for Families and Carers Together. We are Buckinghamshire's Parent Carer Forum.

We are an independent group of parents and carers of children and young people with disabilities and/or special educational needs in Buckinghamshire.

We are here to give parent carers a voice. By joining our forum, you'll be part of a collective effort to enhance and improve the services our children need

Membership is free, and your participation can make a real difference. Join us today!

Go to our website:  
[www.factbucks.org.uk/get-involved/](http://www.factbucks.org.uk/get-involved/)

or email us on:  
[admin@factbucks.org.uk](mailto:admin@factbucks.org.uk)



## Meet the iSEND team

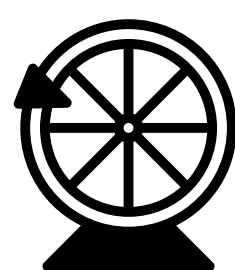
Come for a friendly chat and meet the iSEND team in the Aylesbury area.

This informal session is a great opportunity for parent carers to ask questions, share experiences, and connect with others in a relaxed setting. We look forward to seeing you there!

**20th June from  
11.30am - 1pm**

No booking required, just drop in.

Address: Annex A, Walton Street,  
Aylesbury, Bucks, HP20 1UX



## Annual survey Raffle winners

The lucky winners of the annual survey raffle, randomly selected, are:

1st Prize £250 Trisha Harris

2nd Prize £150 Lisa Mace

3rd Prize £50 Georgie O'Malley

Congratulations, your prizes are on their way!

**For more information on how  
you can get involved, visit:**

**[www.factbucks.org.uk](http://www.factbucks.org.uk)**





## 2024 SEN survey results

In February 2024, we held our annual survey asking what parents and carers think of the services in Bucks. 438 people responded.

The aim of the survey is to capture the overall opinions and experience of families with children with special educational needs in the county. The full results are available on both the FACT Bucks and the SEND IAS websites.

Thank you for your interest in this survey, and again to those who participated in it.

The results are shared with key stakeholders at the County Council, through FACT Bucks and SENDIAS.

Here is a flavour of the results:

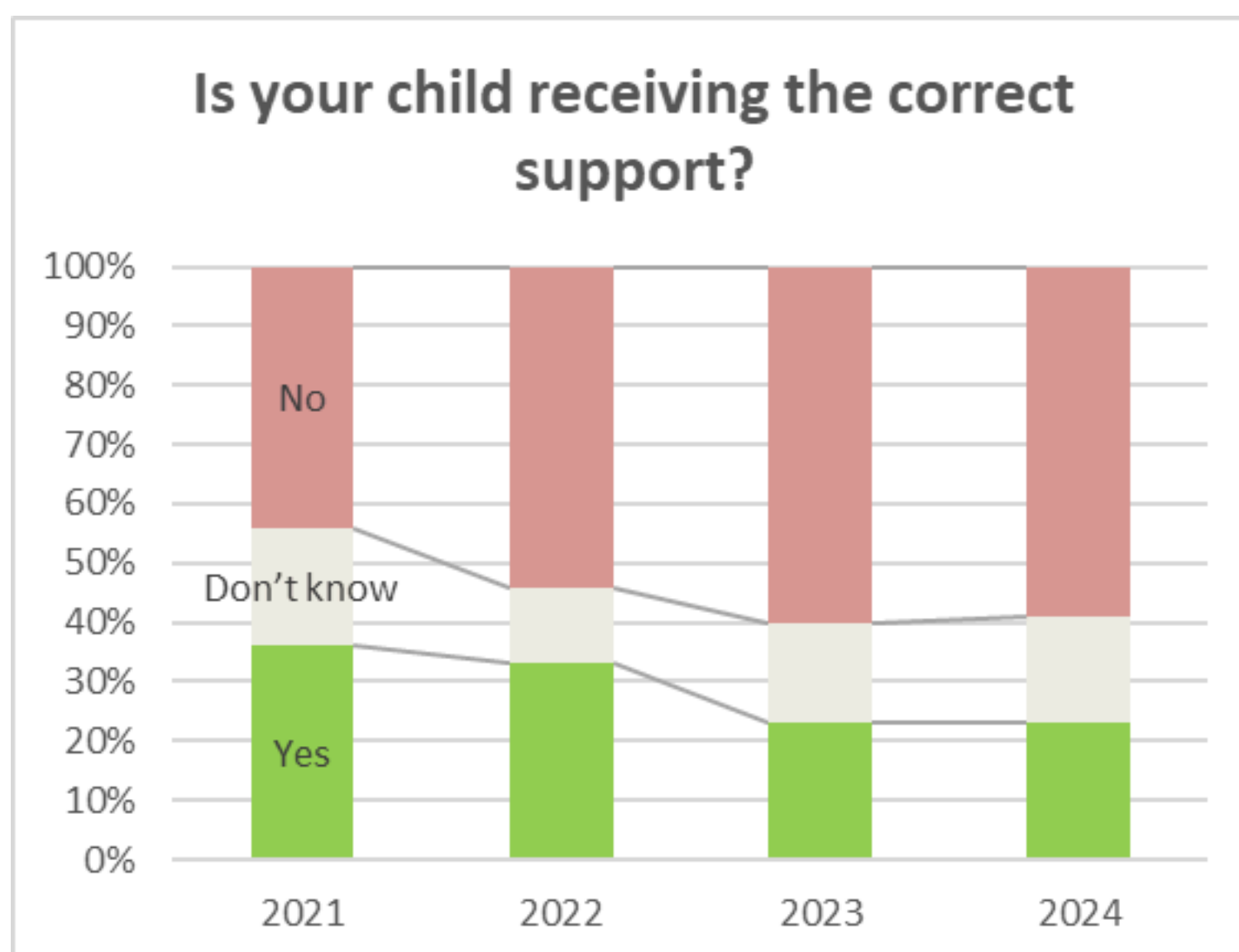
The number of families reporting that their child regularly misses school because of mental or physical health problems has increased to 45%.

68% of respondents' children with SEN but without an EHC plan are on SEN support, 71% have been on SEN support for more than a year.

Only 14% of respondents feel that the SEN support plan is enough to meet their child's needs, with approximately the same number saying that it is not helpful at all, leaving 70% saying that their SEN plan is partially meets need but more help is needed.

Only 19% of respondents are confident that their child will receive appropriate education and/or training post 16.

The full report is available on [www.factbucks.org.uk](http://www.factbucks.org.uk)



For more information on how you can get involved, visit:

[www.factbucks.org.uk](http://www.factbucks.org.uk)



# FACT Parent Carer Forum Newsletter May 2024



## Tell us what you think

FACT has attended Parent Dialogue Groups for several years. Our role is to bring parents and the service leads together to discuss and work on improving services.

Following feedback from parents and carers that the format is not working for them, the County Council would like to re-format them. This is open to all suggestions such as online or in person, small groups or formal meetings.

If you would like to give us your thoughts on how you'd like to represent your views, please email [admin@factbucks.org.uk](mailto:admin@factbucks.org.uk).

## Complex CYP SEND Improvement Workstream

We need to hear the experiences of families whose Children and Young People have Continuing Health Care provision. Too often the needs of this small cohort is overlooked in the planning in the Local Area. Please let us know if you would be willing to share your story confidentially.

You can email us on [admin@factbucks.org.uk](mailto:admin@factbucks.org.uk)

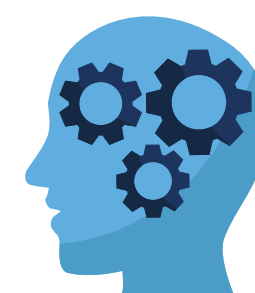
## Preparing for Adulthood



Healthwatch are working with us to reflect on parent carer experience of health transitions for young people aged 14-25. We welcome any volunteers to talk in depth about their experience.

Please contact us on:  
[admin@factbucks.org.uk](mailto:admin@factbucks.org.uk)

## SEND Strategy



The SEND strategy is being updated, not completely re-written, because most of its goals are still important. FACT is helping with key parts, like the context statements and goals. In the summer term, everyone will have a chance to give their feedback. Right now, we are focusing on the Improvement Plan.

**For more information on how  
you can get involved, visit:**

**[www.factbucks.org.uk](http://www.factbucks.org.uk)**

